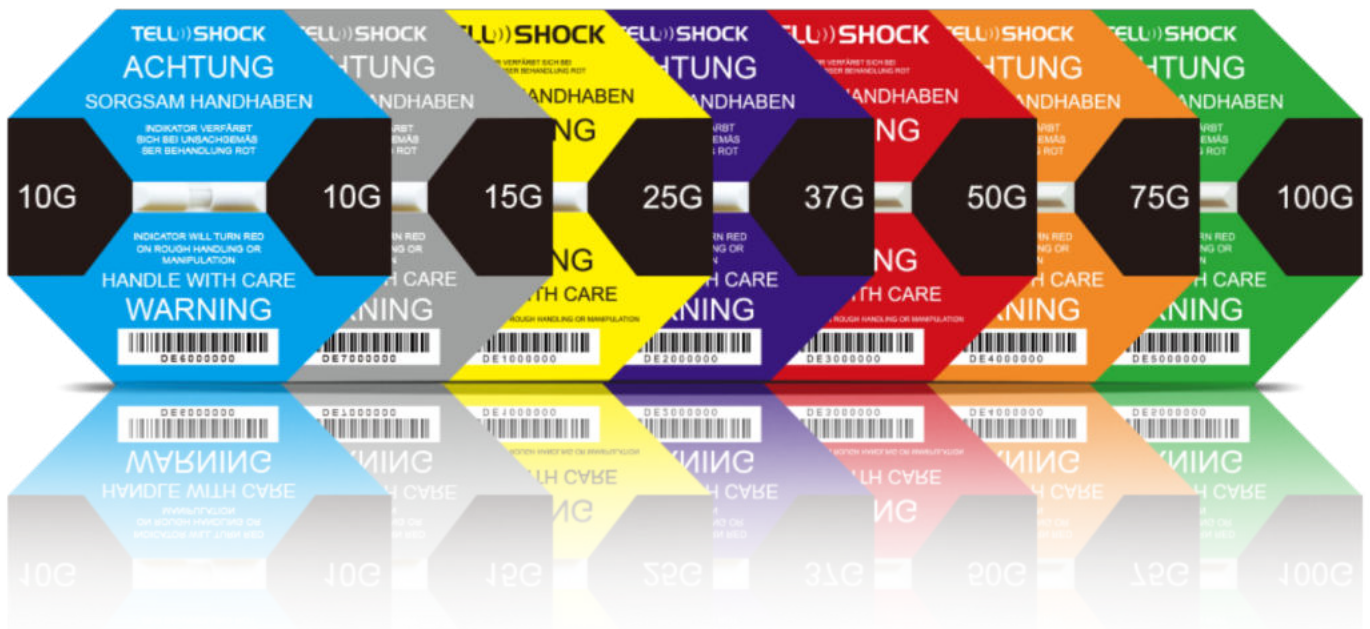




TELL))) SHOCK



Your products must be transported carefully? Monitor cost-effectively with Tell-Shock indicators!

Self-adhesive impact indicator for transport monitoring.

Due to the irreversible indicator with red warning liquid, an exceeding of the acceleration values is indicated immediately.

Special packaging with dry ice is required for shipping the Tell-Shock indicators so that they cannot be triggered during transport. Dimension: 97 x 97 x 4 mm. Packaging unit: 50 pieces

- ➔ Guarantee of high safety during the transport of goods.
- ➔ Sensitivity: 10g 15g 25g 37g 50g 75g 100g, at 50 ms. Shock duration.
- ➔ Red discoloration when triggered regardless of impact direction.
- ➔ Manipulation secured due to serial numbers with barcode.
- ➔ Warning stickers 133x197 mm are included in the delivery.
- ➔ Certified by SGS Group.



TELLS))SHOCK



PRODUKTAUSWAHL PRODUCT SELECTION

kg \ m ³	0-0.03	0.03-0.14	0.14-0.42	0.42-1.42	1.42-2.83	2.83-7.08	7.08-14.16	14.16-304.8	304.8+
0-4.56	100G	100G	75G	75G	50G	37G	-	-	-
4.56-11.34	100G	75G	75G	50G	50G	37G	25G	-	-
11.34-22.68	75G	75G	50G	50G	37G	25G	25G	15G	10G
22.68-45.36	75G	50G	50G	37G	37G	25G	15G	15G	10G
45.36-113.40	50G	50G	37G	37G	25G	25G	15G	15G	10G
113.40-454	50G	50G	37G	25G	25G	15G	15G	10G	-
454-907	-	37G	25G	25G	25G	15G	15G	10G	-
907-2,268	-	-	25G	25G	15G	15G	10G	10G	-
2,268-4,536	-	-	25G	15G	15G	15G	10G	10G	-
4,536-6,804	-	-	-	15G	15G	10G	10G	-	-
6,804-9,072	-	-	-	-	10G	10G	-	-	-

Hinweis: Der Produktauswahl-Leitfaden sollte immer nur als Orientierung verwendet werden.

Note: The selection guide should always be used as starting point only.

Interne Tests sind der beste Weg, um die optimale Auswahl für Ihre Anwendung zu treffen.

Testing is the best way to conduct your application.